



LixelKity K1
Compact Yet Powerful



LixelKity K1

Lixel K1 is XGRIDS' compact handheld scanner. Integrating 48MP x 2 panoramic cameras and 360 ° LiDARs within its body, it generates cm-level colored models for professionals and 3D hobbyists, offering convenient scanning and reconstruction experience.



1kg



color point cloud
in real-time



360°
scanning



convenient
operation



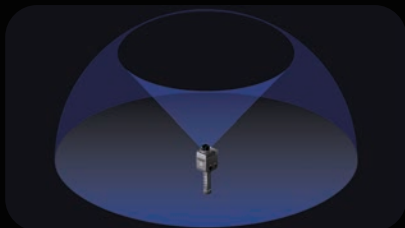
Compact and Lightweight

With a 1kg (with battery) aluminum alloy body, K1 highly Integrated vision modules and LiDAR.



Real-Time Color Point Cloud, Delicate Presentation

48 MP x 2 imaging provides exquisite real-time true-color point clouds.



Panoramic Capture, No Omissions

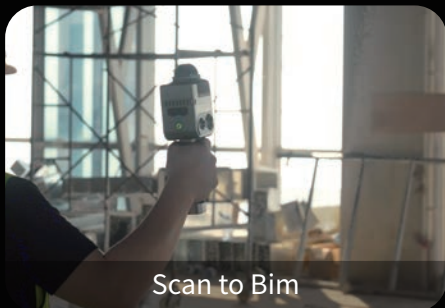
360° x 360° true panoramic vision, 360° laser horizontal scanning field.



Convenient Operation, Collect as You Wish

Its low learning cost makes professional 3D data collection and modeling extremely simple.

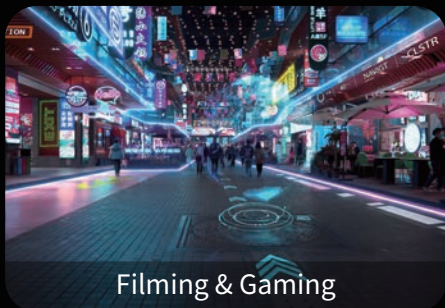
Application Scenarios



Scan to Bim



Digital Twins



Filming & Gaming



Culture & Tourism

Software

PC



LixelStudio

An all-in-one 3D post-processing software that offers a range of features, including point cloud viewing, editing, model generation, and post-processing.

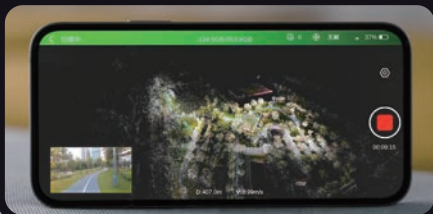


APP



LixelGO

Mobile-controlled operational workflow, real-time preview of scan results, and one-screen monitoring of device status.



Specification

Device Performance

Power Input	14.4V
Power Cosumption	<20W
Weight	1kg
Data Interface	USB3.1 Gen2
Storage Capacity	TF card 256G (Replaceble)
Connection Mode	Wifi/Bluetooth
	2.4G Wifi 2412-2472MHz
	5G2 Wifi 5180-5240MHz
	5G8 Wifi 5745-5825MHz
Operating Temperature	-20°C~50°C
Protection Level	IP54
Product Shell	Navigational Aluminum
Power Ssupply	Fast-lock Battery/External Power
Operating Time	1.5h
Battery Capacity	28.8wh
Number of Cameras	4
Visual-Aided Positioning	Supported
APP WiFi Distance	20m
RTK Module	Supported

Data & Storage

Calculating mode	Real-time calculating/ Mixed calculating
Calculating software	Lixel Studio post-processing software for Windows
Point Cloud Format	.Las
Color point cloud	Supported

Contact Us

Sales and Partners: sales@xgrids.com
Brand and Business Consulting: enterprise@xgrids.com

Follow Us



LinkedIn



Youtube



Facebook



X

Scan Performance

Laser Class	Class1 / 905nm
Relative Accuracy	1.2cm
Absolute Accuracy	3cm
Repeat Accuracy	2cm
Horizontal Accuracy	0.015°
Working Range	0.1m~40m@10%, 70m@80%
LiDAR FOV	360°*-7~+52°
Scan Mode	Mobile
Scan Speed	200,000 Points/s
	Supported
Resume Scanning from Breakpoint	

Visual Module

Camera FOV	Color Panorama HDV 360°*360°
Camera resolution	48MP x 2

Company Address: 29th Floor, Colorful Information Innovation Center,
3176 Keyuan South Road, High-tech South District, Nanshan District, Shenzhen
Company Website: WWW.XGRIDS.COM

*Copyright belongs to Shenzhen XGRIDS Innovation Technology Co., Ltd. Reproduction is authorized only with permission.